

## SOZS-studentsko vrednovanje rada strucnih i administrativnih sluzbi te drugih vidova studentskog zivota-ak. god. 2019.-2020.

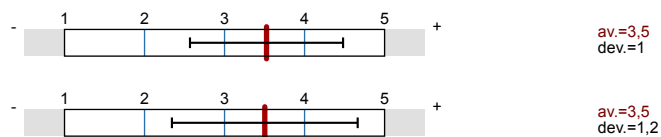


No. of responses = 26

## Overall indicators

## Global Index

## 2. INFRASTRUKTURA SASTAVNICE



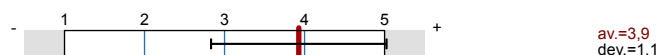
## 3. KNJIŽNICA I PROSTOR ZA UČENJE SASTAVNICE



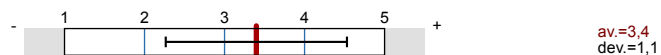
## 4. SVEUČILIŠNA KNJIŽNICA



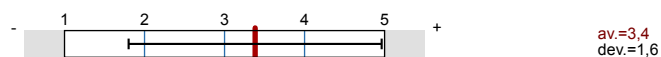
## 5. STUDENTSKA REFERADA



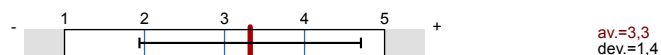
## 6. UPRAVA SASTAVNICE



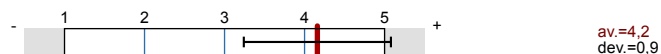
## 7. STUDENTSKI ZBOR SASTAVNICE



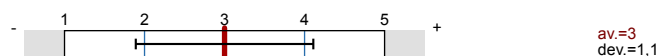
## 8. STUDENTSKI SMJEŠTAJ



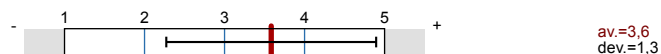
## 9. STUDENTSKA PREHRANA



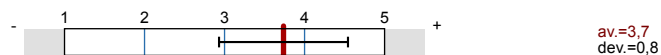
## 10. KULTURNO-UMJETNIČKI SADRŽAJI



## 11. SPORT I REKREACIJA



## 12. ZDRAVSTVENA ZAŠTITA



## 13. MEĐUNARODNA SURADNJA (Ured za međunarodnu suradnju Sveučilišta u Splitu, R. Boškovića 31, kampus)



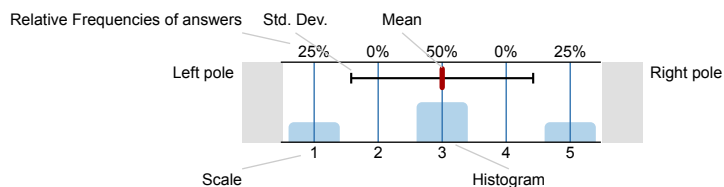
## 14. URED ZA STUDENTE S INVALIDITETOM SVEUČILIŠTA U SPLITU (Zrinsko-frankopanska 38)



## Survey Results

## Legend

Question text



n=No. of responses  
av.=Mean  
dev.=Std. Dev.  
ab.=Abstention

## 1. UVOD

## 1.1) Sastavnica Sveučilišta u Splitu:

Sveučilišni odjel zdravstvenih studija  100% n=26

## 1.2) Spol:

ž  92.3% n=26  
 m  7.7%

## 1.3) Godina studija:

1.  46.2% n=26  
 2.  50%  
 3.  0%  
 4.  0%  
 5.  3.8%  
 6.  0%

## 1.4) Razina studija:

preddiplomski sveučilišni studij  92.3% n=26  
 preddiplomski stručni studij  3.8%  
 kratki stručni studij  0%  
 diplomski sveučilišni studij  3.8%  
 specijalistički diplomski stručni studij  0%  
 integrirani sveučilišni preddiplomski i diplomski studij  0%

## 1.19) Studijski program:

SOZS - Sestrinstvo  46.2% n=26  
 SOZS - Fizioterapija  7.7%  
 SOZS - Primaljstvo  11.5%  
 SOZS - Radiološka tehnologija  19.2%  
 SOZS - Medicinsko-laboratorijska dijagnostika  15.4%

## 1.24) Godina upisa na studij:

2011.  3.8% n=26  
 2018.  50%  
 2019.  46.2%

## 1.25) Dosadašnji prosjek ocjena:

2,0-2,5  0% n=26  
 2,6-3,0  3.8%  
 3,1-3,5  7.7%  
 3,6-4,0  42.3%  
 4,1-4,5  26.9%  
 4,6-5,0  19.2%

1.26) Roditelji mi žive u Splitu:

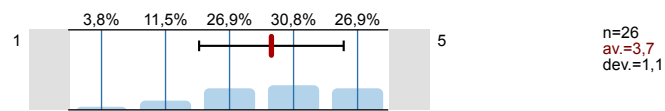


## 2. INFRASTRUKTURA SASTAVNICE

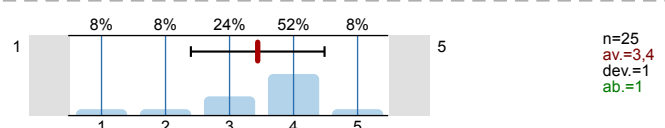
2.1) Nastavu na fakultetu pohađam na:



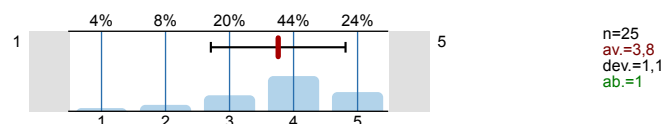
2.2) Prostorni uvjeti – učionice (veličina, osvijetljenje, grijanje...)



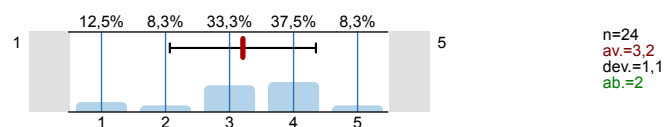
2.3) Prostorni uvjeti – laboratoriji i specijalizirani kabineti (veličina, opremljenost)



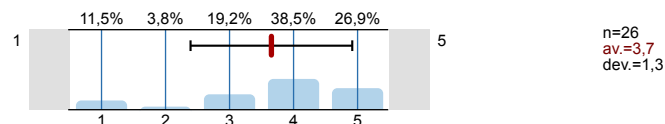
2.4) Informatička opremljenost kabineta i učionica



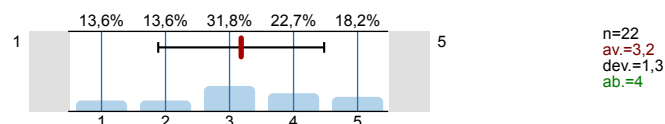
2.5) Informatička opremljenost i dostupnost za slobodne aktivnosti studenata



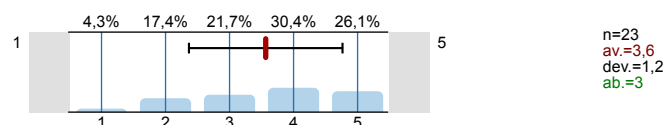
2.6) Mrežna stranica fakulteta (količina informacija i ažuriranje)



2.7) Mrežne stranice nastavnika (količina informacija i ažuriranje)

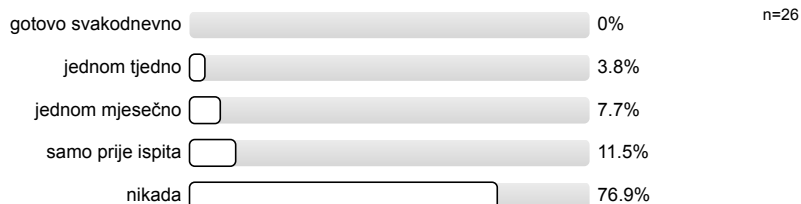


2.8) Mrežne stranice studenata

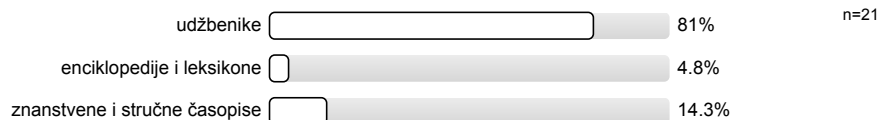


## 3. KNJIŽNICA I PROSTOR ZA UČENJE SASTAVNICE

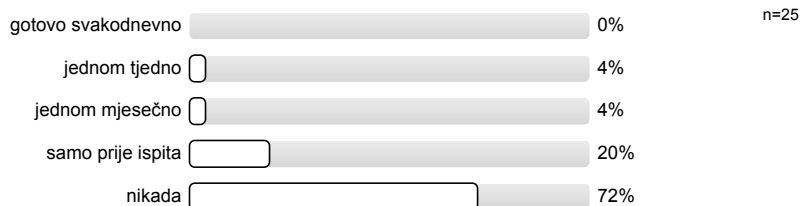
3.1) Koliko često posjećujete knjižnicu na fakultetu na kojemu studirate:



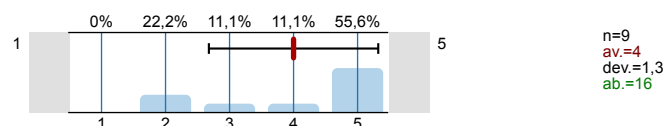
3.2) Koju građu najčešće koristite:



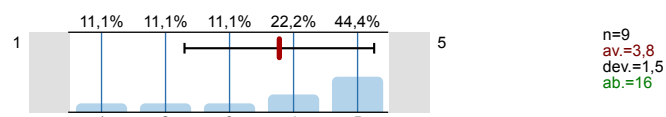
3.3) Čitaonicom u sklopu knjižnice i prostorom za učenje sastavnice se služite:



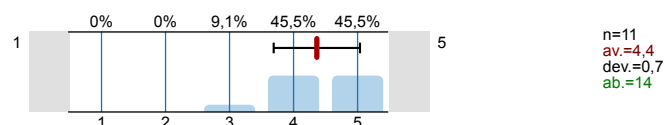
3.4) Radno vrijeme knjižnice:



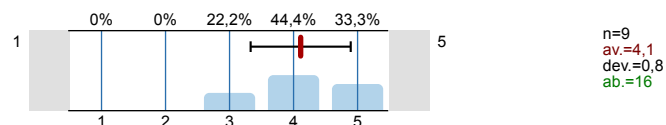
3.5) Prostorni uvjeti



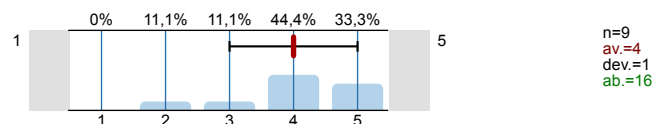
3.6) Ljubaznost osoblja:



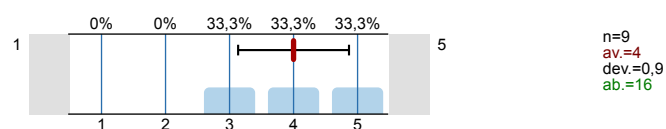
3.7) Brzina dobivanja knjiga:



3.8) Pomoć u pretraživanju kataloga:



3.9) Knjižnični fond:

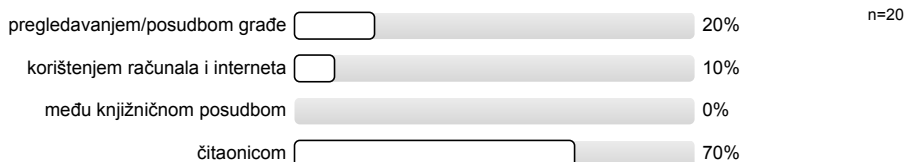


#### 4. SVEUČILIŠNA KNJIŽNICA

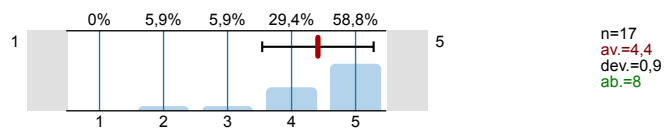
4.1) Koliko često posjećujete Sveučilišnu knjižnicu:



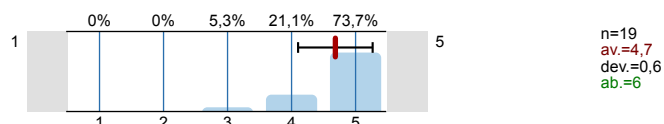
4.2) Kojim se uslugama Sveučilišne knjižnice najviše koristite:



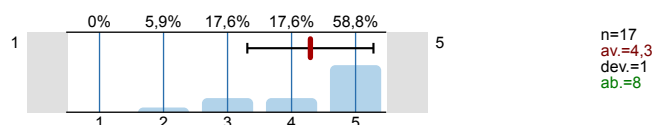
4.3) Radno vrijeme knjižnice:



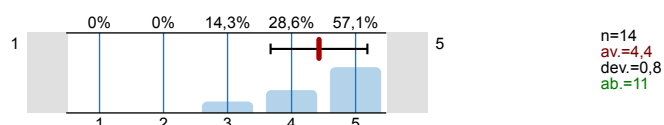
4.4) Prostorni uvjeti



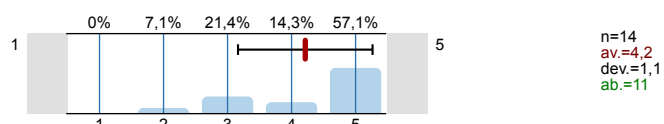
4.5) Ljubaznost osoblja:



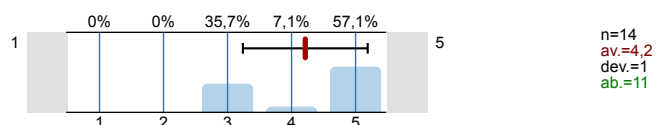
4.6) Brzina dobivanja knjiga:



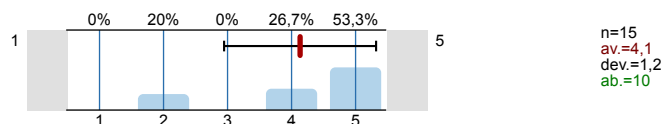
4.7) Pomoć u pretraživanju kataloga:



4.8) Knjižnični fond:

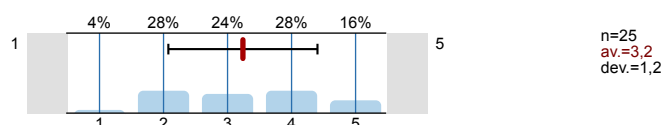


4.9) Informatička infrastruktura:

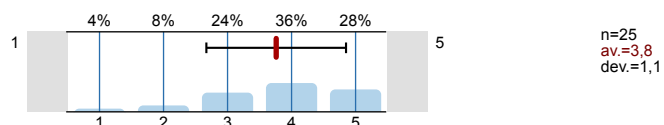


## 5. STUDENTSKA REFERADA

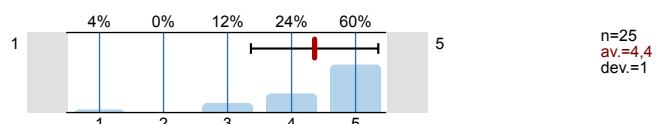
5.1) Radno vrijeme referade:



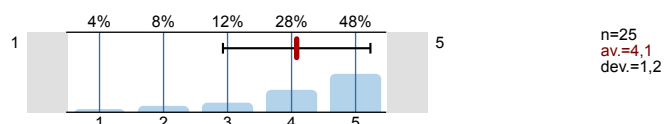
5.2) Prostorni uvjeti:



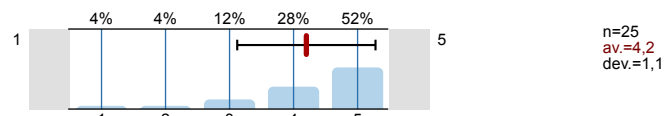
5.3) Ljubaznost i pristupačnost osoblja:



5.4) Pravodobna dostupnost informacija:

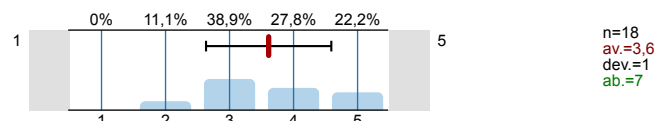


5.5) Kvaliteta dostupnih informacija:

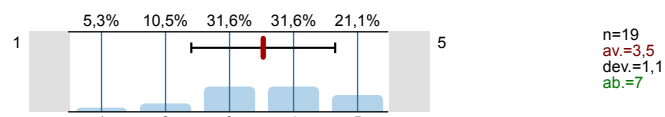


## 6. UPRAVA SASTAVNICE

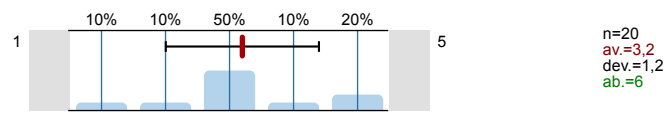
6.1) Dostupnost i pristupačnost članova uprave sastavnice:



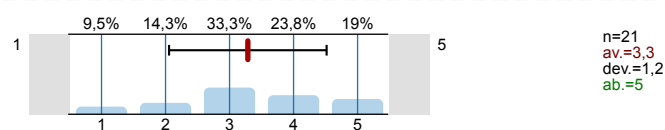
6.2) Odnos uprave sastavnice prema studentima (transparentnost, dostupnost točnih informacija...):



6.3) Zahtjeve studenata rješava u primjerenom roku:

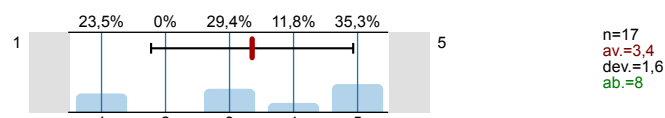


6.4) Podržavanjem studentskih prava:

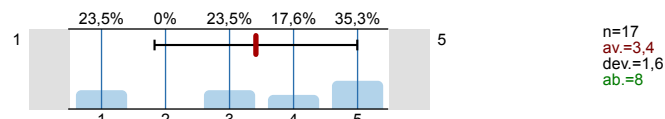


## 7. STUDENTSKI ZBOR SASTAVNICE

7.1) Dostupnost i pristupačnost članova studentskog zbora:



7.2) Odnosi sa studentima od strane studentskog zbora (transparentnost, dostupnost informacija...):

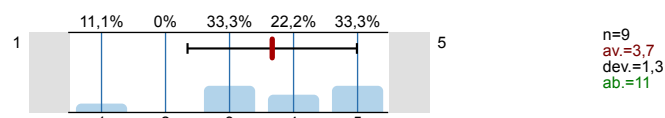


## 8. STUDENTSKI SMJEŠTAJ

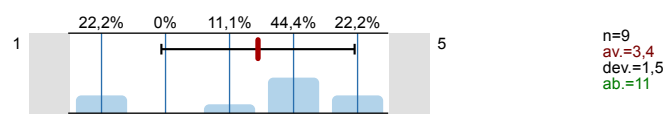
8.1) Smješten sam u studentskom domu



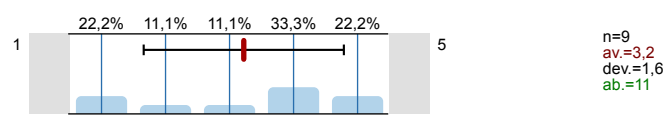
8.2) Uvjetima smještaja



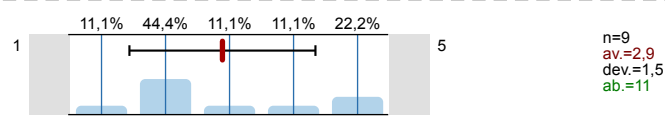
8.3) Javnim/zajedničkim prostorijama za učenje



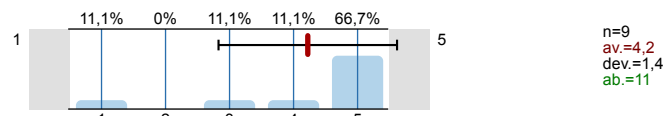
8.4) Higijenom/čistoćom zajedničkih prostorija:



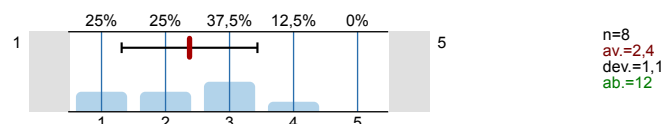
8.5) Poštivanjem reda i pravila ponašanja



8.6) Dostupnošću i ljubaznošću osoblja



8.7) Informatičkom opremljenošću

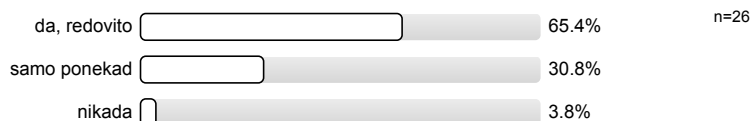


## 9. STUDENTSKA PREHRANA

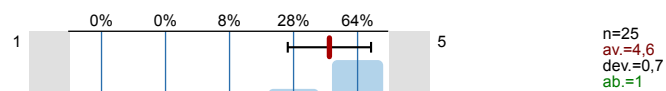
9.1) Imate li organiziranu studentsku prehranu (menza, kantina ili sl.)?



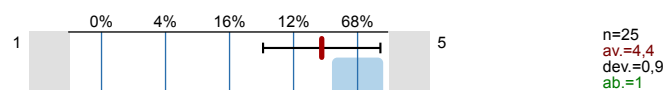
9.2) Hranite li se u studentskim menzama?



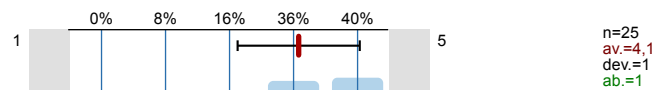
9.3) Udaljenost najbliže menze



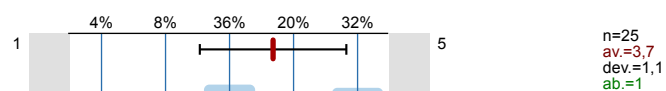
9.4) Radno vrijeme menze



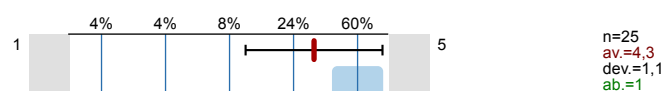
9.5) Pripremljenost hrane:



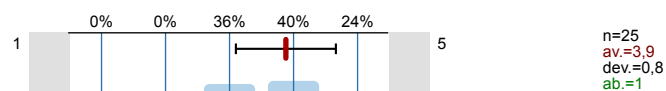
9.6) Nutritivna kvaliteta obroka:



9.7) Količina:

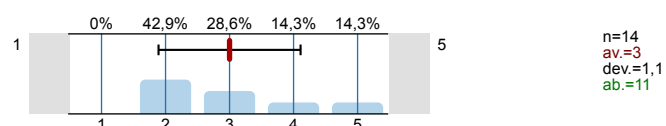


9.8) Opća ocjena kvalitete hrane:



## 10. KULTURNO-UMJETNIČKI SADRŽAJI

10.1) Procijenite svoje zadovoljstvo kulturno-umjetničkim sadržajima na Sveučilištu u Splitu, na ljestvici od 1 do 5, gdje je 1 nimalo zadovoljan, 5 potpuno zadovoljan, a 0 odaberite ukoliko ne možete procijeniti.

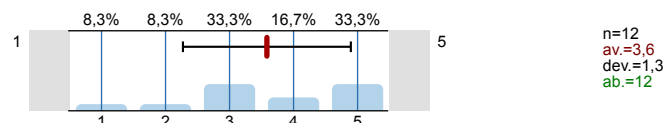


## 11. SPORT I REKREACIJA

11.1) Bavite li se sportom i rekreacijom tijekom studiranja?



11.2) Procijenite svoje zadovoljstvo prostorom i sadržajima za sport i rekreaciju na Sveučilištu u Splitu, na ljestvici od 1 do 5, gdje je 1 nimalo zadovoljan, 5 potpuno zadovoljan, a 0 odaberite ukoliko ne možete procijeniti:



## 12. ZDRAVSTVENA ZAŠTITA

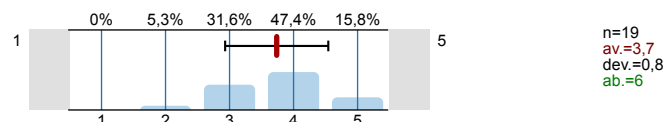
12.1) Jeste li zdravstveno osigurani?



12.2) Jesu li Vam dostupne usluge zdravstvene skrbi u mjestu studiranja?



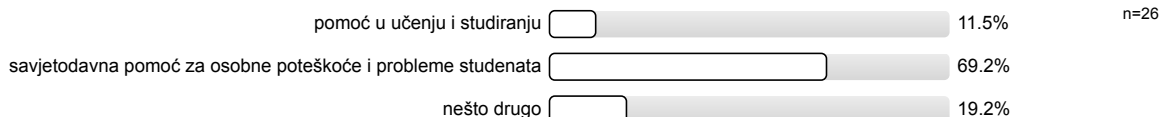
12.3) Procijenite svoje zadovoljstvo kvalitetom zdravstvene skrbi u mjestu svog studiranja, na ljestvici od 1 do 5, gdje je 1 nimalo zadovoljan, 5 potpuno zadovoljan, a 0 odaberite ukoliko ne možete procijeniti:



12.5) Koristite li savjetovanište za studente na Filozofskom fakultetu koje je otvoreno za sve studente?



12.6) Koje bi, po vašem mišljenju, usluge trebalo pružati savjetovanište za studente?

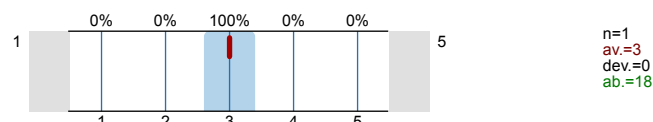


## 13. MEĐUNARODNA SURADNJA (Ured za međunarodnu suradnju Sveučilišta u Splitu, R. Boškovića 31, kampus)

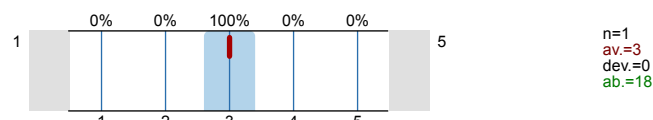
13.1) Koristite li usluge Ureda za međunarodnu suradnju?



13.2) Radno vrijeme ureda:

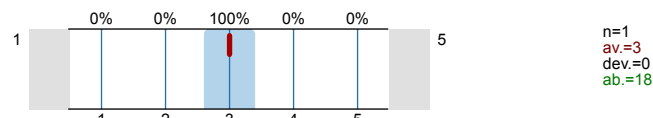


13.3) Prostorni uvjeti:





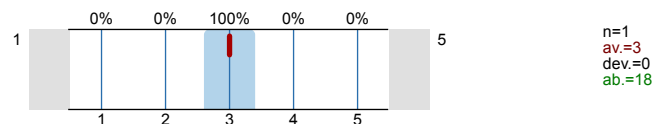
13.4) Ljubaznost i pristupačnost osoblja:



13.5) Rad osoblja:



13.6) Kvaliteta i brzina objavljivanja informacija na Web stranicama Ureda?



## 14. URED ZA STUDENTE S INVALIDITETOM SVEUČILIŠTA U SPLITU (Zrinsko-frankopanska 38)

14.1) Koristite li usluge Ureda za studente s invaliditetom?



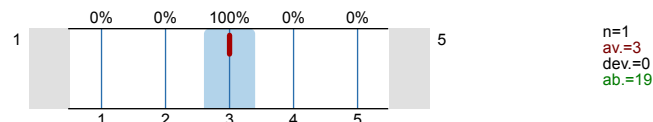
14.2) Jeste li zadovoljni pristupačnošću Ureda?



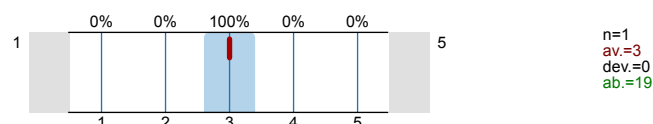
14.3) Olakšava li vam Ured studiranje?



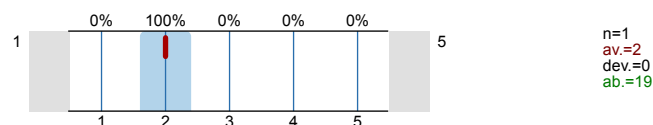
14.4) Radno vrijeme ureda:



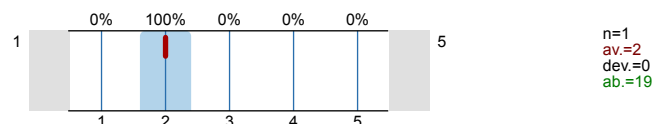
14.5) Prostorni uvjeti:



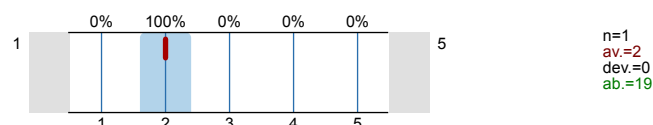
14.6) Ljubaznost i pristupačnost osoblja:



14.7) Rad osoblja:



14.8) Kvaliteta i brzina objavljivanja informacija na Web stranicama Ureda:



# Profile

Compilation: SOZS-studentsko vrednovanje rada strucnih i administrativnih sluzbi te drugih vidova studentskog zivota-

Values used in the profile line: Mean

## 2. INFRASTRUKTURA SASTAVNICE

2.2) Prostorni uvjeti – učionice (veličina, osvjetljenost, grijanje...)	1									5	n=26	av.=3,7	md=4,0	dev.=1,1
2.3) Prostorni uvjeti – laboratoriji i specijalizirani kabineti (veličina, opremljenost)	1									5	n=25	av.=3,4	md=4,0	dev.=1,0
2.4) Informatička opremljenost kabineta i učionica	1									5	n=25	av.=3,8	md=4,0	dev.=1,1
2.5) Informatička opremljenost i dostupnost za slobodne aktivnosti studenata	1									5	n=24	av.=3,2	md=3,0	dev.=1,1
2.6) Mrežna stranica fakulteta (količina informacija i ažuriranje)	1									5	n=26	av.=3,7	md=4,0	dev.=1,3
2.7) Mrežne stranice nastavnika (količina informacija i ažuriranje)	1									5	n=22	av.=3,2	md=3,0	dev.=1,3
2.8) Mrežne stranice studenata	1									5	n=23	av.=3,6	md=4,0	dev.=1,2

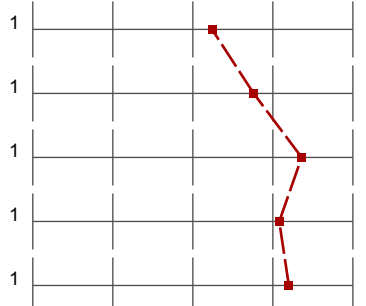
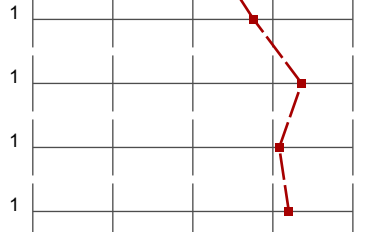
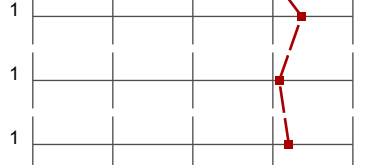
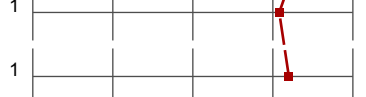

## 3. KNJIŽNICA I PROSTOR ZA UČENJE SASTAVNICE

3.4) Radno vrijeme knjižnice:	1									5	n=9	av.=4,0	md=5,0	dev.=1,3
3.5) Prostorni uvjeti	1									5	n=9	av.=3,8	md=4,0	dev.=1,5
3.6) Ljubaznost osoblja:	1									5	n=11	av.=4,4	md=4,0	dev.=0,7
3.7) Brzina dobivanja knjiga:	1									5	n=9	av.=4,1	md=4,0	dev.=0,8
3.8) Pomoć u pretraživanju kataloga:	1									5	n=9	av.=4,0	md=4,0	dev.=1,0
3.9) Knjižnični fond:	1									5	n=9	av.=4,0	md=4,0	dev.=0,9

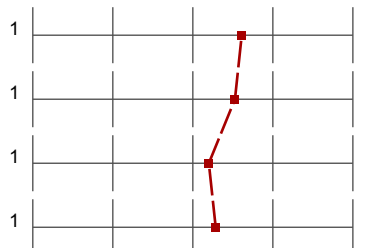
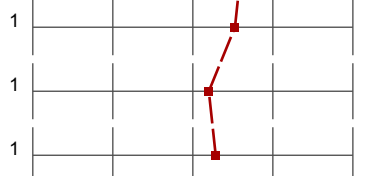


## 4. SVEUČILIŠNA KNJIŽNICA

4.3) Radno vrijeme knjižnice:	1									5	n=17	av.=4,4	md=5,0	dev.=0,9
4.4) Prostorni uvjeti	1									5	n=19	av.=4,7	md=5,0	dev.=0,6
4.5) Ljubaznost osoblja:	1									5	n=17	av.=4,3	md=5,0	dev.=1,0
4.6) Brzina dobivanja knjiga:	1									5	n=14	av.=4,4	md=5,0	dev.=0,8
4.7) Pomoć u pretraživanju kataloga:	1									5	n=14	av.=4,2	md=5,0	dev.=1,1
4.8) Knjižnični fond:	1									5	n=14	av.=4,2	md=5,0	dev.=1,0
4.9) Informatička infrastruktura:	1									5	n=15	av.=4,1	md=5,0	dev.=1,2

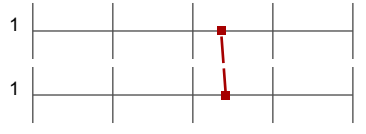

## 5. STUDENTSKA REFERADA

5.1) Radno vrijeme referade:		n=25 av.=3,2 md=3,0 dev.=1,2
5.2) Prostorni uvjeti:		n=25 av.=3,8 md=4,0 dev.=1,1
5.3) Ljubaznost i pristupačnost osoblja:		n=25 av.=4,4 md=5,0 dev.=1,0
5.4) Pravodobna dostupnost informacija:		n=25 av.=4,1 md=4,0 dev.=1,2
5.5) Kvaliteta dostupnih informacija:		n=25 av.=4,2 md=5,0 dev.=1,1

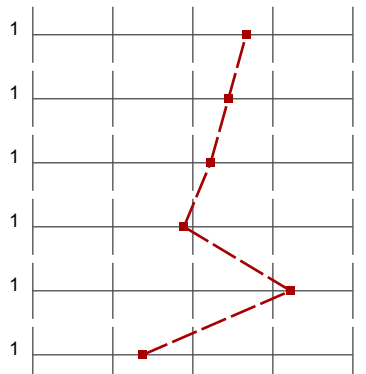
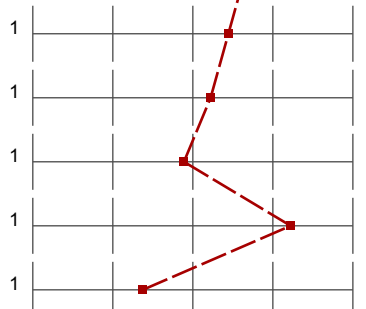
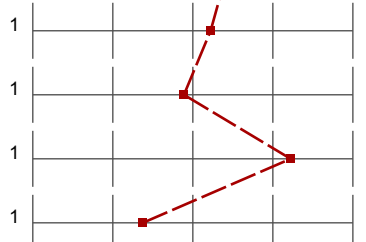
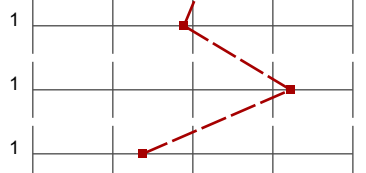
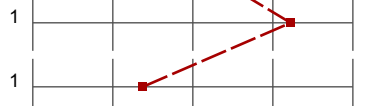

## 6. UPRAVA SASTAVNICE

6.1) Dostupnost i pristupačnost članova uprave sastavnice:		n=18 av.=3,6 md=3,5 dev.=1,0
6.2) Odnos uprave sastavnice prema studentima (transparentnost, dostupnost točnih informacija...):		n=19 av.=3,5 md=4,0 dev.=1,1
6.3) Zahtjeve studenata rješava u primjerenom roku:		n=20 av.=3,2 md=3,0 dev.=1,2
6.4) Podržavanjem studentskih prava:		n=21 av.=3,3 md=3,0 dev.=1,2

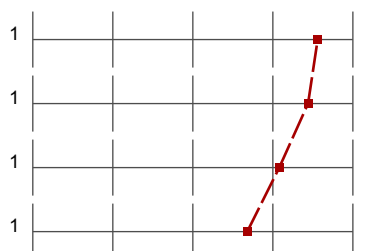
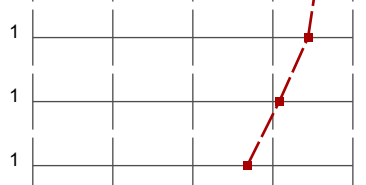


## 7. STUDENTSKI ZBOR SASTAVNICE


7.1) Dostupnost i pristupačnost članova studentskog zbora:		n=17 av.=3,4 md=3,0 dev.=1,6
7.2) Odnosi sa studentima od strane studentskog zbora (transparentnost, dostupnost informacija...):		n=17 av.=3,4 md=4,0 dev.=1,6

## 8. STUDENTSKI SMJEŠTAJ

8.2) Uvjetima smještaja		n=9 av.=3,7 md=4,0 dev.=1,3
8.3) Javnim/zajedničkim prostorijama za učenje		n=9 av.=3,4 md=4,0 dev.=1,5
8.4) Higijenom/čistoćom zajedničkih prostorija:		n=9 av.=3,2 md=4,0 dev.=1,6
8.5) Poštivanjem reda i pravila ponašanja		n=9 av.=2,9 md=2,0 dev.=1,5
8.6) Dostupnošću i ljubaznošću osoblja		n=9 av.=4,2 md=5,0 dev.=1,4
8.7) Informatičkom opremljenošću		n=8 av.=2,4 md=2,5 dev.=1,1

## 9. STUDENTSKA PREHRANA

9.3) Udaljenost najbliže menze		n=25 av.=4,6 md=5,0 dev.=0,7
9.4) Radno vrijeme menze		n=25 av.=4,4 md=5,0 dev.=0,9
9.5) Pripremljenost hrane:		n=25 av.=4,1 md=4,0 dev.=1,0
9.6) Nutritivna kvaliteta obroka:		n=25 av.=3,7 md=4,0 dev.=1,1

9.7) Količina:		n=25 av.=4,3 md=5,0 dev.=1,1
9.8) Opća ocjena kvalitete hrane:		n=25 av.=3,9 md=4,0 dev.=0,8

## 10. KULTURNO-UMJETNIČKI SADRŽAJI

10.1) Procijenite svoje zadovoljstvo kulturno-umjetničkim sadržajima na Sveučilištu u Splitu, na ljestvici od 1 do 5, gdje je 1 nimalo		n=14 av.=3,0 md=3,0 dev.=1,1
--	--	------------------------------






## 11. SPORT I REKREACIJA

11.2) Procijenite svoje zadovoljstvo prostorom i sadržajima za sport i rekreaciju na Sveučilištu u Splitu, na ljestvici od 1 do 5, gdje je 1 nimalo		n=12 av.=3,6 md=3,5 dev.=1,3
---	--	------------------------------






## 12. ZDRAVSTVENA ZAŠTITA

12.3) Procijenite svoje zadovoljstvo kvalitetom zdravstvene skrbi u mjestu svog studiranja, na ljestvici od 1 do 5, gdje je 1 nimalo zadovoljan,		n=19 av.=3,7 md=4,0 dev.=0,8
--	--	------------------------------

## 13. MEĐUNARODNA SURADNJA (Ured za međunarodnu suradnju Sveučilišta u Splitu, R. Boškovića 31, kampus)

13.2) Radno vrijeme ureda:		n=1 av.=3,0 md=3,0 dev.=0,0
13.3) Prostorni uvjeti:		n=1 av.=3,0 md=3,0 dev.=0,0
13.4) Ljubaznost i pristupačnost osoblja:		n=1 av.=3,0 md=3,0 dev.=0,0
13.5) Rad osoblja:		n=1 av.=3,0 md=3,0 dev.=0,0
13.6) Kvaliteta i brzina objavljivanja informacija na Web stranicama Ureda?		n=1 av.=3,0 md=3,0 dev.=0,0

## 14. URED ZA STUDENTE S INVALIDITETOM SVEUČILIŠTA U SPLITU (Zrinsko-frankopanska 38)

14.4) Radno vrijeme ureda:		n=1 av.=3,0 md=3,0 dev.=0,0
14.5) Prostorni uvjeti:		n=1 av.=3,0 md=3,0 dev.=0,0
14.6) Ljubaznost i pristupačnost osoblja:		n=1 av.=2,0 md=2,0 dev.=0,0
14.7) Rad osoblja:		n=1 av.=2,0 md=2,0 dev.=0,0
14.8) Kvaliteta i brzina objavljivanja informacija na Web stranicama Ureda:		n=1 av.=2,0 md=2,0 dev.=0,0

## Comments Report

## 12. ZDRAVSTVENA ZAŠTITA

<sup>12.4)</sup> Vaše primjedbe na dostupnost i kvalitetu zdravstvene skrbi u mjestu studiranja:

- .
- /
- Nema ih.
- Nemamo liječnika opće medicine, nemamo uputnice da daljnje pretrage, moramo sve to obavljati i uzimati u mjestu iz kojeg dolazimo
- Preveliko čekanje za dolazak na red te dolazanje preko veze
- nedostatak stomatologa
- preduga liste čekanja

13. MEĐUNARODNA SURADNJA (Ured za međunarodnu suradnju Sveučilišta u Splitu, R. Boškovića 31, kampus)

<sup>13.7)</sup> Ako imate primjedbe, sugestije ili zapažanja vezana za Ured za međunarodnu suradnju, molimo da to iznesete ovdje:

■ /

14. URED ZA STUDENTE S INVALIDITETOM SVEUČILIŠTA U SPLITU (Zrinsko-frankopanska 38)

<sup>14.9)</sup> Ako imate primjedbe, sugestije ili zapažanja vezana za Ured i/ili za uvjete studiranja osoba s invaliditetom, molimo da to iznesete ovdje:

■ /